

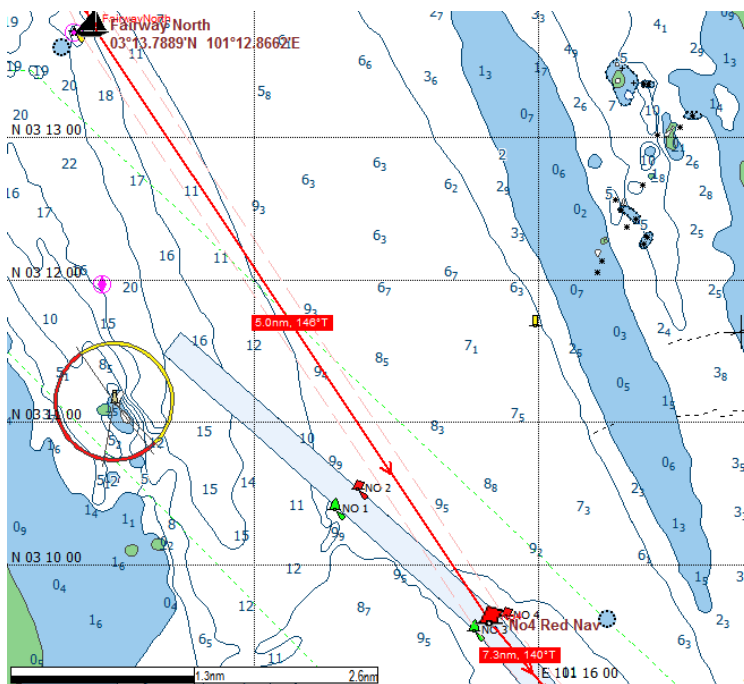
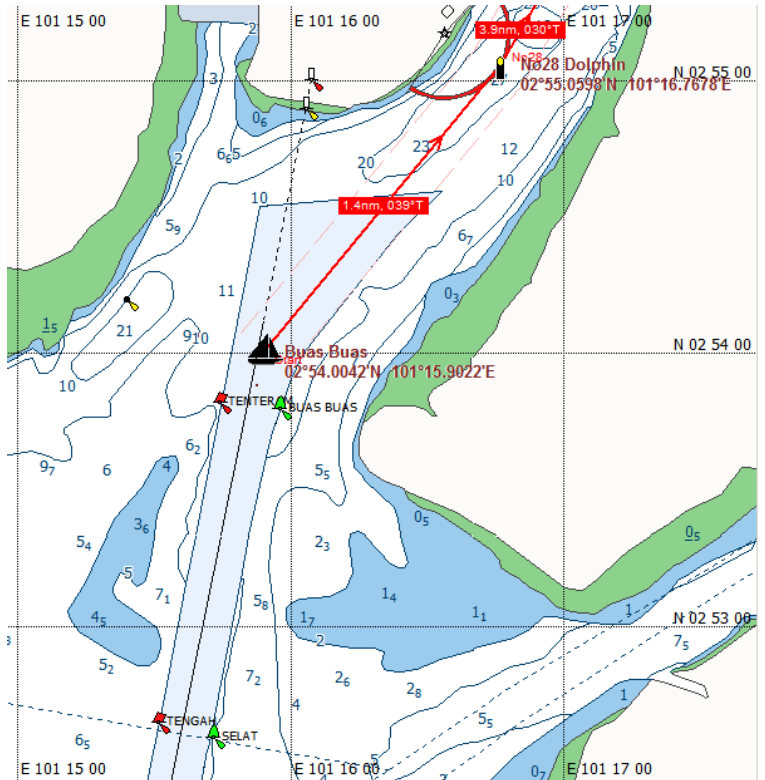
Raja Muda Selangor International Regatta

Navigation to & Berthing at RSYC

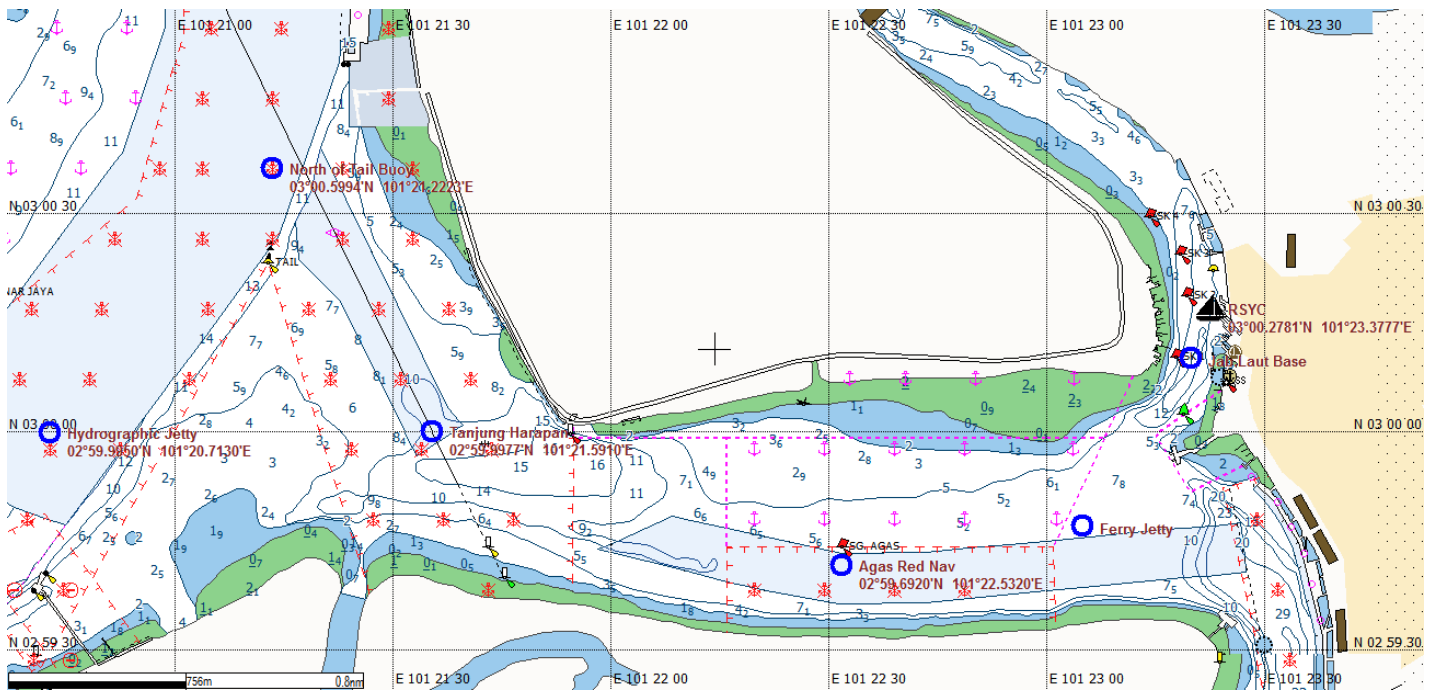
Approaches & Navigation Notes

- Refer to the charts and routes below – These are for guidance ONLY and we cannot bear any responsibility for errors or omissions.
- Boats coming from the south, enter via Buas Buas & Westport channel then follow the route to RSYC.
- Boats coming from the north, enter via Pulau Angsa & Northport then follow the route to RSYC.
- This is a busy commercial port and there are large container ships, tugs, pilot boats and bunker boats operating 24 hours.
- Call “RSYC” on VHF 72 after passing AGAS red nav buoy, as there are busy times when you may need to stand off near the ferry jetty until berths are ready.
- Try to arrive in the 2 hours before high water or at low water so as to avoid strong river and tidal currents.0
- RSYC pontoon at N 03°00.28' , E 101°23.38'

Route Data:	RSYC from the south	
Description	Lat	Lng
Start (Buas Buas)	02°54.01'N	101°15.90'E
No28	02°55.06'N	101°16.77'E
No25	02°58.47'N	101°18.71'E
Hydrographic Jetty	02°59.99'N	101°20.71'E
Tanjung Harapan	02°60.00'N	101°21.59'E
Agas Red Nav Buoy (call “RSYC” on VHF72 for instructions)	02°59.69'N	101°22.53'E
Ferry Jetty	02°59.78'N	101°23.08'E
Jab. Laut base	03°00.17'N	101°23.33'E
RSYC Pontoons	03°00.28'N	101°23.38'E
Total distance = 10.8nm		



Route Data:	RSYC from North	
Description	Lat	Lng
Fairway North	03°13.79'N	101°12.87'E
'BATUAN PENYU' White	FI(2) W.5s 6m 10M	
No4 Red	03°09.59'N	101°15.67'E
No12 Red	03°03.98'N	101°20.34'E
Elbow Green	03°02.42'N	101°20.97'E
North of Tail	03°00.60'N	101°21.22'E
Buoy North Pillar B/Y	Q(1) W 0.2M	
Tanjung Harapan	02°60.00'N	101°21.59'E
Agas Red Nav Buoy (call “RSYC” on VHF72 for instructions)	02°59.69'N	101°22.53'E
Ferry Jetty	02°59.78'N	101°23.08'E
Jab Laut Base	03°00.17'N	101°23.33'E
RSYC Pontoons	03°00.28'N	101°23.38'E
Total distance = 19.4nm		



Click on image to open larger image

Berthing

- Berths are available at RSYC for boats below 20 metres LOA, that prebook and inform RSYC of their estimated arrival date and time.
- Please note that some berths do not have electrical power nor water supply.
- Berthing at RSYC is free for participating yachts for 7 days prior to the first race.
- Boats over 20 metres may need to anchor at the area west of the Ferry Jetty and use the water taxi.

Malaysian Clearance, Immigration and Customs information

Download information sheet at [RSYC website](#)

Refer to the [RMSIR google map](#) and the website showing location of main services and regatta office.

- Customs, Immigration and Port Authorities are within 15 minutes walking distance from RSYC. Note that ALL crew must attend the immigration clearance. A map will be available at the regatta office.
- Taxis -- numbers will be displayed on the information board
- Car parking is available at the yacht club.
- Train – the KTM station is 15 minutes' walk from the yacht club.
- Ships supplies -- There are plenty of supermarkets within a few minutes taxi drive.
- Chandlery -- there are some suppliers in or near the yacht club.
- Fuel -- Diesel available on the RSYC fuel jetty, petrol in cans can be obtained through the yacht club.
- Ice -- will be available from the bar at RSYC for those that order it before 18:00 on Friday.
- Party -- will be held in the Yacht Club main building.

Cargo & Baggage

- Boats using the **cargo** service to Langkawi service must pay for their transport in the regatta office and obtain labels for each item prior to loading them onto the cargo truck. Truck will be available for loading on Friday all day.
- Daily **baggage**, with label attached, must be deposited into the baggage truck **before 10:00am** on Saturday