



**16<sup>th</sup> - 24<sup>th</sup> November 2018**

## **SAILING INSTRUCTIONS**



Organised by the Royal Selangor Yacht Club



In association with the Royal Ocean Racing Club

# CONTENTS

1. RULES	Pg. 3
2. NOTICES TO COMPETITORS	Pg. 3
3. CHANGES TO SI	Pg. 4
4. SIGNALS MADE ASHORE	Pg. 4
5. SCHEDULE OF RACES	Pg. 4
6. CLASS FLAGS AND IDENTIFICATION	Pg. 4
7. RACE AREA	Pg. 5
8. COURSES	Pg. 5
9. MARKS	Pg. 5
10. AREAS THAT ARE OBSTRUCTIONS	Pg. 5
11. THE START	Pg. 5
12. CHANGE TO THE NEXT LEG OF THE COURSE	Pg. 7
13. THE FINISH	Pg. 7
14. PENALTY SYSTEM	Pg. 7
15. TIME LIMITS	Pg. 7
16. PROTESTS AND REQUESTS FOR REDRESS	Pg. 8
17. SCORING	Pg. 8
18. SAFETY REGULATIONS	Pg. 9
19. PASSAGE RACES RADIO COMMUNICATIONS	Pg. 9
20. HARBOUR RACES RADIO COMMUNICATIONS	Pg. 10
21. DISCLAIMER OF LIABILITY	Pg. 10
22. INSURANCE	Pg. 10
23. ANNEX A – Passage Races 1, 2 & 5 – All Classes	Pg. 11
24. ANNEX B – Gate for Classes 5 & 6 Only	Pg. 12
25. ANNEX C – Windward / Leeward Courses	Pg. 13
26. ANNEX D – Penang Cruising Classes	Pg. 14
27. ANNEX D – Penang Course Diagram	Pg. 15
28. ANNEX E – Langkawi Buoy & Island Courses	Pg. 16
29. LANGKAWI - Mark Co-ordinates	Pg. 18

## **ORGANIZING AUTHORITY**

The Organizing Authority is the Royal Selangor Yacht Club (RSYC), under the auspices of the Malaysian Sailing Association (MSA) and in association with the Royal Ocean Racing Club (RORC).

## **1 RULES**

1.1 The Regatta will be governed by the rules as defined in the Racing Rules of Sailing

1.2 The following will apply

- The IRC Rule 2018, Parts A, B and C. for Classes 0, 1, 2, 3 and 4
- The RMSIR Rating System for Classes 5 & 6.
- The OMR Rating System for Class 7.
- The International Regulations for Preventing Collisions at Sea (IRPCAS), (Steering and Sailing Rules) will apply between sunset and sunrise and will replace the rules of RRS Part 2
- RSYC / RMSIR Safety Regulations based on the World Sailing Offshore Special Regulations for Race Category 4 without life rafts for Passage Races.
- RSYC / RMSIR Safety Regulations based on the World Sailing Special Regulations – Appendix B Special Regulations for Inshore Races with additions.
- The Notice of Race.
- These Sailing Instructions.
- No National Prescriptions will apply
- In case of conflict between any of the above, succeeding items take precedence. This changes RRS63.7.
- In the case of a conflict between a written instruction and a diagram or drawing, the written instruction shall take precedence.

1.3 IRC Rule 22.4.2 shall not apply. There will be no limitation on crew numbers / weight

1.4 IRC boats may carry one additional spinnaker to that shown on their IRC Certificate without incurring an increase in rating. This changes IRC Rule 21.6.1.

1.5 For the purpose of IRC Rules 21.1.5(d) & (e) this Regatta is on consecutive days and the sails carried shall remain the same.

1.6 RRS Rule 55 is changed by adding the following: However, discarding elastic or wool bands when setting sail cannot be protested by a boat.

1.7 RRS Rule 52 will not apply to boats in IRC Classes, which have declared the use of stored power to the Rating Authority (IRC Rule 15) prior to the issue of the current IRC certificate, or to boats in Classes 5 and 6, who may use stored power for sail adjustment. Also RRS Rule 52 will not apply to boats in Class 7 which have declared the use of stored power prior to the issue of their OMR certificate.

1.8 Boats with series date of 2000 and later shall have a minimum STIX/IRC STIX value of 23. Boats with series date before 2000 shall have a minimum STIX/IRC STIX value of 23 or a minimum SSS Base Value of 15.

## **2 NOTICE TO COMPETITORS**

Notices to competitors will be posted on Official Notice Boards outside the Race Office at:

RSYC, Port Klang

Straits Quay Marina, Penang

Seaview Resort, Pangkor

RLYC, Langkawi

### 3 CHANGES TO SI

Any changes to the sailing instructions will be posted before 08:00 on the day they will take effect, except that any changes in the scheduling of races will be posted by 18:00 on the day before they will take effect.

### 4 SIGNALS MADE ASHORE

- 4.1 Signals made ashore will be displayed on a flagpole at a location near the Official Notice Board in each location.
- 4.2 When flag AP is displayed ashore, "1 minute" is replaced with "not less than 60 minutes" in the race signal AP.

### 5 SCHEDULE OF RACES

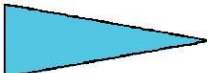
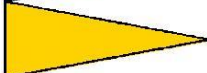
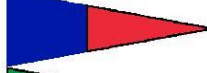
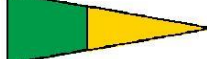
5.1 The scheduled time of the **warning signal** for the first start each day is

Sat 17 Nov	12:55	Passage Race to Pangkor	Race 1	Classes 1 - 6
Mon 19 Nov	12:55	Passage Race to Penang	Race 2	Classes 1 - 6
Wed 21 Nov	12:55	Harbour Races in Penang	Race 3 & 4	Classes 0, 1, 3, 4, 7
			Race 3	Classes 2, 5, 6
Thu 22 Nov	12:55	Passage Race to Langkawi	Race 5	Classes 0 - 7
Fri 23 Nov	13:55	Harbour Races in Langkawi	Race 6 & 7	Classes 0, 1, 3, 4, 7
			Race 6	Classes 2, 5, 6
Sat 24 Nov	11:55	Harbour Races in Langkawi	Race 8 & 9	Classes 0, 1, 2, 3
			Race 8	Classes 4, 5, 6, 7

5.2 On Saturday, 24<sup>th</sup> November no warning signal will be made after 15.30

### 6 CLASS FLAGS AND IDENTIFICATION

6.1 The following flags will serve as class flags and boats (except Class 7) shall display their class flag on their backstay while racing.

Class 0 & 1	IRC 1	
Class 2	Premier IRC Cruising	
Class 3	IRC 3	
Class 4	IRC4	
Class 5	Cruising	
Class 6	Classic Cruising	
Class 7	Ocean Multihulls	

6.2 Regatta Hull Numbers will be allocated to all entries at the time of registration, and pairs of distinguishing stickers issued. They shall be displayed clearly on both sides of the bow at all times while racing. Replacements for damaged or lost stickers will be available from the Regatta Secretariat.

## **7 RACE AREA**

Annexes A to E show the location of the racing areas.

## **8 COURSES**

The diagrams and descriptions in Annexes A to E show the courses, including the order in which marks are to be passed and the side on which each mark is to be left. Courses for each class will be displayed on a board on the start boat, showing the class flag and course number. Courses for each class will also be broadcast on VHF radio prior to the starts.

## **9 MARKS**

- 9.1 Colours, shapes and locations of mark used are shown in Annexes A to E.
- 9.2 The Additional Directional Mark for the Passages races will be a round red buoy.

## **10 AREAS THAT ARE OBSTRUCTIONS**

- 10.1 Notice to mariners. Dangers on Passage Races routes
- 10.2 Approaches to Penang Anchorage
- 10.3 Ships anchored on approaches to Langkawi

## **11 THE START**

- 11.1 Races will be started using Rule 26, with the warning signal being made 5 minutes before the starting signal.
- 11.2 The warning signal for each succeeding class will be made with or after the starting signal of the preceding class, except for passage races where Class 5 will start 10 minutes after Class 6, and Class 4 will start 10 minutes after Class 5.
- 11.3 Start locations will be as described in Annexes A – E.
- 11.4 The Starting Line will be between a staff displaying an orange flag on the Signal Boat at the Starboard end, and the starting mark (ODM) at the Port end. If an Inner Distance Mark (IDM) is laid, boats shall pass between the ODM and the IDM when approaching the line to start or starting.
- 11.5 It is intended that Classes will start in the following order for the first race of each day:  
Class 0 will start at the same times as Class 1.  
Class starts may be combined depending on numbers entered in each class.

## PASSAGE RACES 1, 2 & 5 on 17<sup>th</sup>, 19<sup>th</sup> & 22<sup>nd</sup> November

The scheduled time of the **warning signal** for the first start each day is:

	<b>17/11</b>	<b>19/11</b>		<b>22/11</b>
<b>Class 6</b>	12:55	12:55	<b>Class 6</b>	12:55
<b>Class 5</b>	13:05	13:05	<b>Class 5</b>	13:05
<b>Class 4</b>	13:15	13:15	<b>Class 4</b>	13:15
<b>Class 3</b>	13:20	13:20	<b>Class 3</b>	13:20
<b>Class 2</b>	13:25	13:25	<b>Class 2</b>	13:25
<b>Class 1</b>	13:30	13:30	<b>Class 1 &amp; 0</b>	13:30
			<b>Class 7</b>	13:35

## HARBOUR RACES

The scheduled time of the **warning signal** for the first start each day is:

<b>Penang</b>	<b>Class 2</b>	12:10	1 Race	<b>Fay Koo Penang Harbour Series</b>
<b>Wed 21/11</b>	<b>Class 5</b>	12:15	1 Race	
	<b>Class 6</b>	12:20	1 Race	
	<b>Class 1 &amp; 0</b>	12:40	2 Races	
	<b>Class 3</b>	12:45	2 Races	
	<b>Class 4</b>	12:50	2 Races	
	<b>Class 7</b>	12:55	2 Races	

<b>Langkawi</b>	<b>Class 2</b>	13:55	1 Race	<b>Langkawi Harbour Series</b>
<b>Fri 23/11</b>	<b>Class 5</b>	14:00	1 Race	
	<b>Class 6</b>	14:05	1 Race	
	<b>Class 1 &amp; 0</b>	14:25	2 Races	
	<b>Class 3</b>	14:30	2 Races	
	<b>Class 4</b>	14:35	2 Races	
<b>Class 7</b>	14:40	2 Races		

<b>Langkawi</b>	<b>Class 7</b>	11:25	1 Race	<b>Langkawi Harbour Series</b>
<b>Sat 25/11</b>	<b>Class 4</b>	11:30	1 Race	
	<b>Class 5</b>	11:35	1 Race	
	<b>Class 6</b>	11:40	1 Race	
	<b>Class 1 &amp; 0</b>	12:00	2 Races	
	<b>Class 2</b>	12:05	2 Races	
<b>Class 3</b>	12:10	2 Races		

11.6 For subsequent starts, classes may be started in any order. Information will be announced on VHF radio.

11.7 For classes 0, 1, 2, 3, 4 & 7, for Passage races a boat starting later than 30 minutes after her starting signal and for Harbour races later than 4 minutes after her starting signal will be scored DNS without a hearing. This changes Rule A5.

11.8 For classes 5 & 6, for Passage races a boat starting later than 60 minutes after her starting signal and for Harbour races later than 4 minutes will be scored DNS without a hearing. This changes Rule A5.

## **12 CHANGE TO THE NEXT LEG OF THE COURSE (Windward /Leeward Courses)**

- 12.1 To change the next leg of the course, the Race Committee will lay a new mark (or move the finish line) and remove the original mark as soon as practicable. When in a subsequent change a new mark is replaced, it will be replaced with an original mark.
- 12.2 Boats may without penalty request and be given details or confirmation of a course change from the 'Signal Boat' on VHF radio

## **13 THE FINISH**

- 13.1 The Finish Line for Passage Races 1 and 2, will be between a signal boat displaying an Orange flag ( and a White light flashing 4 times every 8 seconds at night) at the Starboard end, and a Yellow inflatable buoy ( with a Red light flashing 3 times every 6 seconds at night) at the Port end.
- 13.2 The Finish Line for Passage Race 5 will be between a signal boat displaying an Orange flag (and a White light flashing 4 times every 8 seconds at night) at the Starboard end, and the lighthouse on Pulau Enggang located at N06° 14.62' E99° 52.59'.
- 13.3 The Finish Lines for Windward/Leeward, Buoy and Island courses are shown in Annex D and Annex E.

## **14 PENALTY SYSTEM**

- 14.1 For all classes Rule 44.1 is changed so that the two turn penalty is replaced by a one turn penalty.
- 14.2 For Passage Races the following penalty will apply to a boat found at a hearing to have broken a rule of Part 2, or which is scored OCS in accordance with Rule 29 and 30:
- The worse of
- (1) add 5% of corrected time to the boats corrected time or
- (2) 20% of number of boats entered in that class rounded 0.5 upward to next whole number.
- However, the penalty will not be worse than DSQ.  
(This changes Rule 64.1 and Rule Appendix A.)
- 14.3 Any penalty that may be imposed on a boat or boats at the discretion of the International Jury may include (but is not restricted to) time or scoring adjustments to the race in question or to any other race or to the series overall.

## **15 TIME LIMITS**

- 15.1 The cut-off time limits are:

Windward / Leeward Courses	2.5 hours	
Island / Buoy Courses	17:00	
Port Klang to Pangkor (Race 1)	All Classes	24 hours
Pangkor to Penang (Race 2)	All Classes	24 hours
Penang to Langkawi (Race 5)	All Classes	20 hours

- 15.2 Boats finishing outside these limits will be scored Did Not Finish (DNF) without a hearing. (This changes Rule 35 and A4)
- 15.3 For Harbour races if the first boat does not finish with this time limit and the Race Committee has recorded times at previous mark rounding then these times will be used to calculate the results for all boats in that class. (This changes Rule 35)
- 15.4 Boats in Classes 5 & 6 in Passage Races shall submit Form LG1 (Declaration Form) within Protest Time. Boats that fail to submit the form within the protest time may be disqualified without a hearing. This changes RRS 35, A4 and A5.

## 16 PROTESTS AND REQUESTS FOR REDRESS

- 16.1 Protests must be lodged at the Regatta Office. Protest Forms are to be completed in English language. Protest and requests for redress or reopening shall be delivered there within the appropriate time limit.
- 16.2 For each class the Protest Time Limit for Passage Races 1 & 2 is 5 hours and for Passage Race 5 is 3 hours, after the last boat in the respective class finishes.  
  
For all other races for each class the Protest Time Limit is 90 minutes after the last boat in the respective class finishes its last race of the day, or the Race Committee signals no more racing today, whichever is later
- 16.3 Protests involving handicaps or sail measurement shall be lodged before the Protest Time Limit of the first race in which the protested boat starts.
- 16.4 Notices will be posted within 30 minutes of the expiry of the protest time limit to inform competitors of hearings in which they are parties or named as witnesses. Hearings will be held in the designated Jury room without delay.
- 16.5 Notices of protest by the race committee, technical committee or protest committee will be posted to inform boats under RRS 61.1(b).
- 16.6 On the last scheduled day of racing a request for redress based on a protest committee decision shall be delivered no later than 30 minutes after decision was posted. This changes RRS 62.2.
- 16.7 Breaches of Instructions 6.2 and 18.2 will not be grounds for a protest by a boat. (This changes Rule 60.1(a)).
- 16.8 Penalties may be less than disqualification if the International Jury so decides.

## 17 SCORING

- 17.1 The Low Point Scoring System in Rule A4.1 will apply
- 17.2 For the series involving **Classes 1 and 3** nine races are scheduled, of which at least three races, including a coastal passage race and two Harbour races shall be completed to constitute the series. No score will be excluded. This changes Rule A2.
- 17.3 For the series involving **Class 4**, eight races are scheduled, of which at least three races, including a coastal passage race and two Harbour races shall be completed to constitute the series. No score will be excluded. This changes Rule A2.
- 17.4 For the series involving **Class 0 & 2**, seven races are scheduled, of which at least three races, including a coastal passage race and a Harbour race shall be completed to constitute the series. No score will be excluded. This changes Rule A2.



- 17.5 For the series involving **Classes 5, 6 and 7**, six races are scheduled, of which at least three races, including a coastal passage race and an Harbour race shall be completed to constitute the series. No score will be excluded. This changes Rule A2.
- 17.6 For Penang Harbour races the combined lowest points total will be used to calculate each of the class winners of the **Fay Koo Penang Harbour Series** prizes.
- 17.7 For Langkawi Harbour races the combined lowest points total of all races on Friday and Saturday will be used to calculate each of the class winners of the **Langkawi Harbour Series** prizes.
- 17.8 For boats in **Classes 5 & 6** in Passage Races a series of passing gates have been established as per Annex B. Boats which fail to complete the entire race may be given points based on results calculated using the time they sailed through the furthest gate from the start.

## **18 SAFETY REGULATIONS**

- 18.1 Boats may be subject to inspection before, during and after racing.
- 18.2 The RSYC / RMSIR Safety Check List shall be completed and signed by each boat's skipper and will be handed in at Registration.
- 18.3 The Race Committee reserves the right to prevent a boat racing if she does not comply with the safety regulations.
- 18.4 At the start of each race a boat shall carry sufficient fuel to be capable of propelling her from the race start to the next stop over location.
- 18.5 During harbour racing in Penang and Langkawi, if a boat chooses to leave an anchor in place at the overnight anchorage then one anchor must be carried on board in order to comply with WSO Cat 4 safety regulation 4.6

## **19 PASSAGE RACES RADIO COMMUNICATIONS**

- 19.1 Radio reporting will be undertaken on Marine VHF Channel 72
- 19.2 During Passage races radio reporting shall be undertaken
- When a boat decides to retire from a race
  - When a boat is within 2 nm of the finishing line to advise the Race Committee of their Hull Number and ETA
  - Immediately after finishing to confirm they have crossed the finishing line and to ensure confirmation that their finishing time has been recorded.
- 19.3 The Escort Commander is responsible for coordinating radio reports. Escort Vessels will be nominated to serve as official Radio Ships to receive and relay messages pertaining to the conduct of the race. The Radio Ships are not intended to be used to tow, ferry crew or relay private messages except in an emergency.
- 19.4 Competing boats (especially those with powerful transmitters), which may hear other boats attempting to call the Radio Ships or the Race Committee without reply, are encouraged to act as a relay station.
- 19.5 A boat retiring from a race shall notify the Radio Ship and /or the Race Committee as soon as possible by whatever means (e.g. radio, cell/sat-phone, hail, message) and confirm their ability to reach port without assistance or otherwise.

- 19.6 All boats are required to carry a YB tracking device supplied by the Organising Authority and this tracking device must be positioned as instructed and switched on at all times during passage races. A boat on which such a unit fails or ceases to operate will be required to provide a full report and may be subject to penalties or disqualification from the race

## **20 HARBOUR RACES RADIO COMMUNICATIONS**

All communication will be on VHF Channel 72.

## **21 DISCLAIMER OF LIABILITY**

Competitors participate in the regatta entirely at their own risk. See Rule 4, Decision to Race. The organizing authority will not accept any liability for material damage or personal injury or death or consequential loss sustained in conjunction with or prior to, during, or after the regatta.

## **22 INSURANCE**

Each participating boat shall be insured with valid third-party liability insurance with a minimum cover of US\$ 1 million per incident or the equivalent. The race committee may, at its absolute discretion, consider a change in this minimum cover for boat owners who are restricted by the insurance conditions applicable in their country of residence.

## Annex A – Passage Races 1, 2 & 5 – ALL CLASSES

### A1 Course for Race 1 (approx. 74nm)

Start (Near No. 12 Nav. Buoy)	N 03° 04.00'	E 101° 20.50'
Finish (East of Pulau Bulon)	N 04° 00.00'	E 100° 38.00'

### A2 Course for Race 2 (approx. 65nm)

Start (North East of Pulau Pangkor)	N 04° 12.55'	E 100° 32.00'
Finish (South of Pulau Rimau)	N 05° 13.00'	E 100° 16.80'

### A3 Course for Race 3 (approx. 52nm)

Start (North of Pulau Pinang)	N 05° 29.70'	E 100° 18.70'
Finish (East of Pulau Enggang)	N 06° 14.67'	E 099° 52.77'
Finish -- Pulau Enggang Lighthouse (P) --- Finish Boat (S)		

### A4 Direction Mark

- a. An additional direction mark may be laid as the first mark of the course. If used, it will be laid within 1nm of the starting line and the approximate compass bearing from the starting line to the direction mark will be displayed on a board on the Signal Boat, together with **W flag and a RED or GREEN flag**, which will be hoisted at the same time as the Warning Signal for the start of the class(es) to which it applies. The red or green flag will indicate that the direction mark is to be left to port or starboard respectively.
- b. The direction mark (if laid) will be an inflatable **RED** buoy.

A5 If for any reason a Signal Boat is not on station at the finishing line, boats are to pass through the finish position shown above and record the time using GPS clock. Finish times are to be passed to the Race Committee without delay.

## Annex B – Gates for CLASSES 5 & 6 ONLY

### B1 SCORING SYSTEM FOR CLASSES 5 AND 6 USING GATE SYSTEM

1. Boats shall record their GPS times and Longitude as they pass through ALL “Latitude Gates” of the course. They should also record, if known, the name of the boats that passed the gate in front and behind them.
2. Boats that do not finish within the time limit shall be finished at the last gate they passed through **under sail** before the time limit expired.
3. A boat that finishes the complete course within the time limit shall not be placed below one that does not, and no boat shall be placed higher than a boat finishing at gate beyond the one at which she finishes.
4. In the event that a boat becalmed starts its engine in order to make progress, the exact time and position of that event shall be entered into this declaration form. A boat that uses its engine shall be deemed as having finished at the last gate she passed through under sail, even if she then continues to sail the rest of the course. This changes RRS Rule 35.

### B2 Passage Race “Gates” System for shortened courses

1. The following “Latitude Gates”, determined by a line of Latitude, shall be passed through by all boats in classes 5 & 6 in the sequence Gate 1, Gate 2, Finish.
2. All boats in Classes 5 & 6 shall send their times for crossing Gate 1 and Gate 2 by SMS message to **+6019 494 1363** in the format  
<Boat>space<Gate>space<HH MM SS>  
as soon as they have crossed Gate 2, or as soon after this time when a functioning mobile telephone signal is available.
3. Form LG1, signed by the Skipper and one crew shall be submitted to the Race Office before the end of Protest Time. Boats that fail to submit the form within the protest time may be disqualified without a hearing. This changes RRS A5

### B3 Latitude Gates for Passage Races for classes 5 & 6

	Race 1	Race 2	Race 5
Gate 1	<b>N 03°25.00'</b>	<b>N 04°30.00'</b>	<b>N 05°45.00'</b>
Gate 2	<b>N 03°45.00'</b>	<b>N 05°00.00'</b>	<b>N 06°00.00'</b>
	<b>Finish</b>	<b>Finish</b>	<b>Finish</b>

*BERTHING NOTE:*

*After finishing these races, and confirming their finish via **VHF 72**, boats are to then use **VHF 77** to communicate with the “**Regatta Control**” berthing master upon approaching the respective stopover ports.*

## Annex C – Windward / Leeward Courses

The selected course for each class will be signalled by the appropriate number board which will be displayed on the Signal Boat at the Warning Signal

### C1 The Start

Start position in Penang will be approx:	<b>N 05° 29.70'</b>	<b>E 100° 18.70'</b>
Start position in Langkawi will be approx:	<b>N 06° 17.50'</b>	<b>E 099° 48.00'</b>

### C2 Marks

The Starting Mark will be an inflatable Red triangle buoy  
 The Finishing Mark will be an inflatable Yellow cylindrical buoy  
 Marks M1 and M2 will be an inflatable Red cylindrical buoy.  
 Mark M1A will be an inflatable Yellow cylindrical buoy.  
 The change mark for M1 will be a Yellow thin cylindrical buoy,  
 The change mark for M1A will be a Yellow thin cylindrical buoy, with a black band.

### C3 Courses

All marks shall be rounded to Port

**Course 1 Start, M1, Finish**

**Course 2 Start, M1, M2, M1, Finish**

**Course 3 Start, M1, M2, M1, M2, M1, Finish**

**Course 4 Start, M1A, Finish**

**Course 5 Start, M1A, M2, M1A, Finish**

**Course 6 Start, M1A, M2, M1A, M2, M1A, Finish**



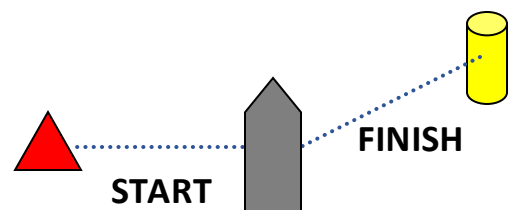
**M1**



**M1A**



**M2**



## Annex D – Penang Cruising Classes

The selected course for each class will be signalled by means of the course board on the Start Boat

### D1 The Start

The start will be approx. **N 05° 29.70' E 100° 18.70'**

#### The Finish (See diagram)

The finish will be between a Blue flag on a RC Boat at the Starboard end and a Red triangle buoy at the port end. This finish is an extension of the finish of the W/L Courses (See diagram)

### D2 Marks

The Starting Mark will be an inflatable Red triangle buoy  
The Finishing Mark will be an inflatable Red triangle buoy  
Marks A will a chequered black/white cylindrical buoy.  
Marks B, C and D will be inflatable Yellow cylindrical buoys.

Mark B            N 05 29.80    E 100 15.90'

Mark C            N 05 31.70    E 100 16.40'

Mark D            N 05 31.60    E 100 17.30'

### D3 Courses

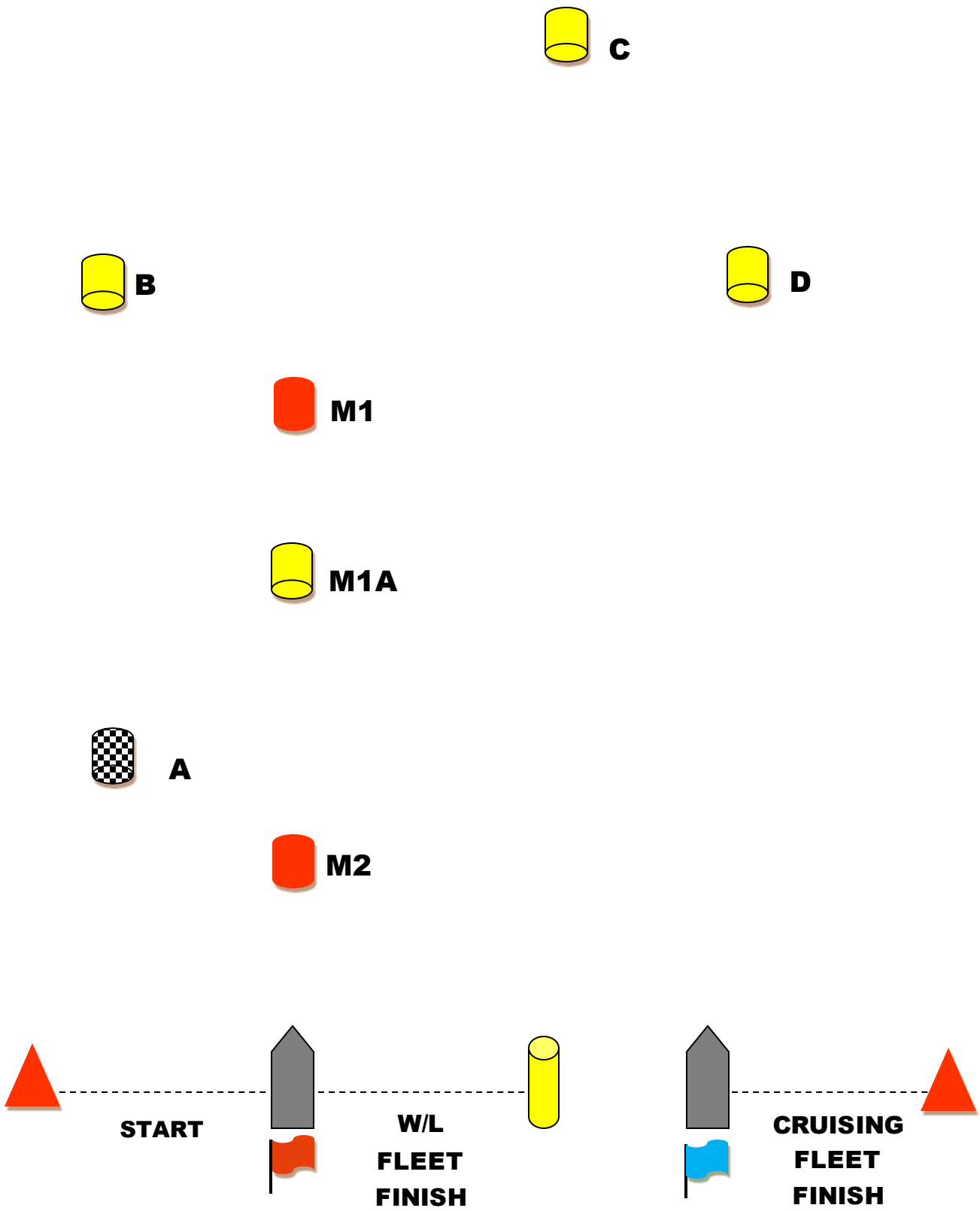
#### Mark A

The first mark (Mark A) for all courses will be laid within 1nm of the Starting Boat. The bearing to the mark and its co-ordinates will be broadcast before the start. Flag W will be displayed along with a Red or Green Flag, which will indicate if Mark A is to be rounded to Port or Starboard respectively.

#### All other marks will be rounded to starboard.

Course 1	Start, A, B, D, Finish.	approx. 6nm
Course 2	Start, A, B, C, D, Finish.	approx. 8nm
Course 3	Start, A, B, C, D, C, D, Finish.	approx. 11nm
Course 4	Start, A, B, D, B, D, Finish.	approx. 11nm
Course 5	Start, A, B, C, D, B, D, Finish.	approx. 13nm
Course 6	Start, A, B, C, D, B, D, B, D, Finish.	approx. 17nm
Course 7	Start, A, B, C, D, B, C, D, Finish.	approx. 19nm

# Annex D – Penang Course Diagram



Distances and angles are not to scale

## Annex E – Langkawi Buoy and Island Courses

The selected course for each class will be signalled by means of the course board on the Signal Boat

### E1 The Start

The start will be at approx. N 06° 17.50' E 099° 48.00'

The Start will be between an orange flag on the RC and a Yellow pillar buoy port end.  
The start will be a downwind start.

### The Finish

The Finish Line for the Langkawi Island Races will be between a Yellow Pillar Buoy at the Port end and a Red Triangle Buoy at the Starboard end at the Start Line location.

### E2 Marks

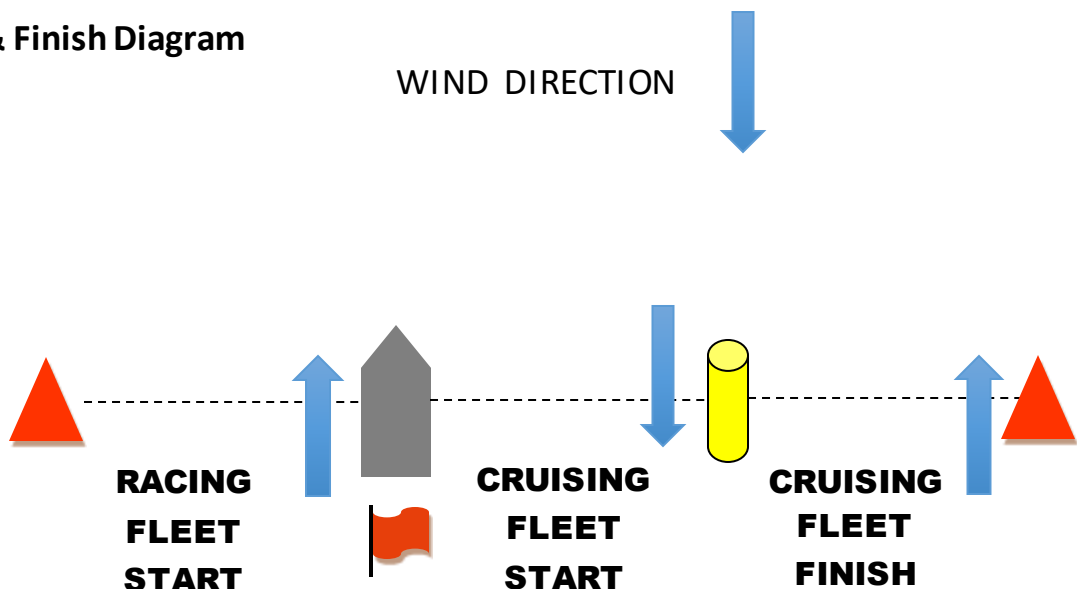
Marks are yellow buoys, or geographical features / islands.

Coordinates & charted names, shown on the chart on Page 17 & 18

### E3 Direction Mark

An additional direction mark A, a chequered black/white spherical buoy, may be laid as the first mark of the course. If used, it will be laid within 1nm of the starting line and the approximate compass bearing from the starting line to the direction mark will be displayed on a board on the Signal Boat, together with W flag and a **RED** or **GREEN** flag, which will be hoisted at the same time as the Warning Signal for the start of the class(es) to which it applies. The red or green flag will indicate that the direction mark is to be left to port or starboard respectively.

### E4 Start & Finish Diagram

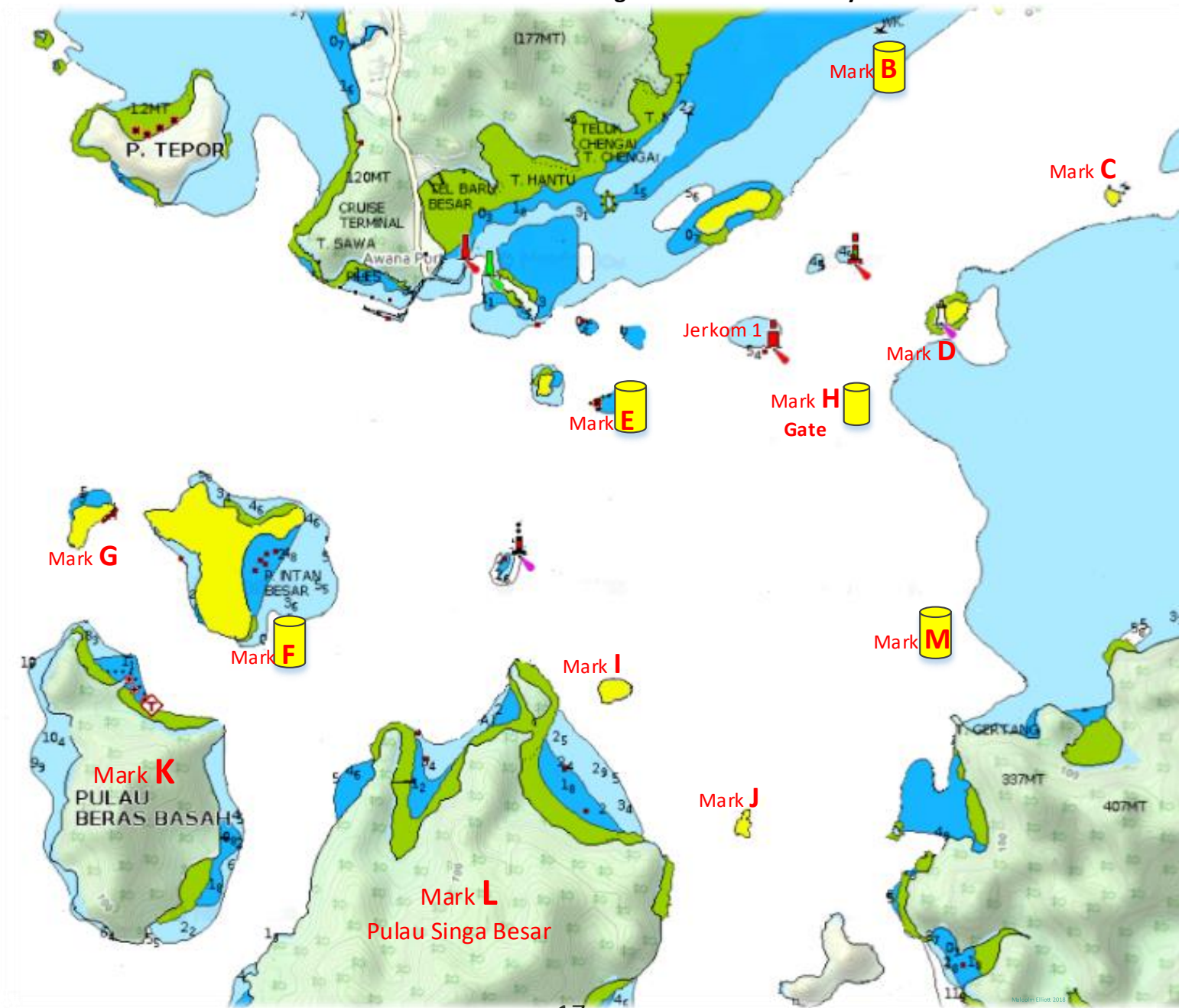




## E5 Courses

Course 1	Start, B(p), M(s), E(s), Finish at H(gate).	approx. 7.2 nm
Course 2	Start, B(p), C(s), D(p), M(s), I(s), E(s), Finish at H(gate).	approx. 9.5nm
Course 3	Start, J(s), I(s), H (gate), Finish.	approx. 10.5nm
Course 4	Start, F(s), G(s), H(gate), Finish.	approx. 13.4nm
Course 5	Start, I(s), F(s), G(s), H(gate), Finish.	approx. 13.9nm
Course 6	Start, J(s), I(s), F(s), G(s), H(gate), Finish.	approx. 14.7nm
Course 7	Start, K(s), G(s), H(gate), Finish.	approx. 15.3nm
Course 8	Start, L(p), H(gate), Finish.	approx. 17.6nm
Course 9	Start, L(s), K(s), G(s), H(gate), Finish.	approx. 19.1nm

Chartlet not to be used for navigation – reference only



## E6 Mark Coordinates

**Mark B** Yellow Buoy  
N 06° 16.20' E 99° 45.90'

**Mark C** Jerkom Kecil  
N 06° 15.90' E 99° 46.90'

**Mark D** Jerkom Besar (caution reef 100m around island)  
N 06° 15.40' E 99° 46.30'

**Mark E** Yellow Buoy  
N 06° 14.90' E 99° 44.90'

**Mark F** Yellow Buoy  
N 06° 13.93' E 99° 43.60'

**Mark G** Pulau Intan Kechil  
N 06° 14.60' E 99° 42.80'

**Mark I** Pulau Singa Kechil  
N 06° 13.90' E 99° 44.90'

**Mark J** Pulau Jong  
N 06° 13.40' E 99° 45.40'

**Mark K** Pulau Beras Basah  
N 06° 13.40' E 99° 43.00'

**Mark L** Pulau Singa Besar  
N 06° 12.20' E 99° 44.00'

**Mark M** Yellow Buoy  
N 06° 14.10' E 99° 46.30'

### **Mark H Gate.**

Boats will pass between the Jerkom 1 Buoy at N 06° 15.26' E 99° 45.45' and a Yellow spherical Mark, or a RC boat flying the H flag, positioned to the South East of the buoy.

### **SPECIAL SAFETY NOTES**

- The Malaysian Maritime Rescue Coordinating Centre (MRCC), situated at Putrajaya, coordinates Maritime Search and Rescue Operations within the Malaysian Area of Responsibility.
- MRCC maintains 24 hour watch on HF SSB 8124 kHz and VHF Channel 16 via relay stations.
- The MRCC call sign is LIMA KELANG.
- There is a Maritime Rescue Sub-Centre in Penang, call sign LIMA PENANG, on the same frequencies.
- Telephone numbers for the MRCC are :  
+603 8941 3140 and +603 8941 3129, and for MRSC Langkawi +604 9665307
- MMEA safety vessels and ground stations monitor AIS & DSC transmissions, so we strongly advise you to make use of any AIS transponders you have fitted to your vessel.

*Mobile telephone coverage includes most of the racing areas, with 4G / 3G / HPSA / GPRS available in most areas near to the coast. It is a requirement to have at least one Malaysian mobile number on each boat as roaming connectivity is dependent upon your service provider.*

-----END OF S.I. -----