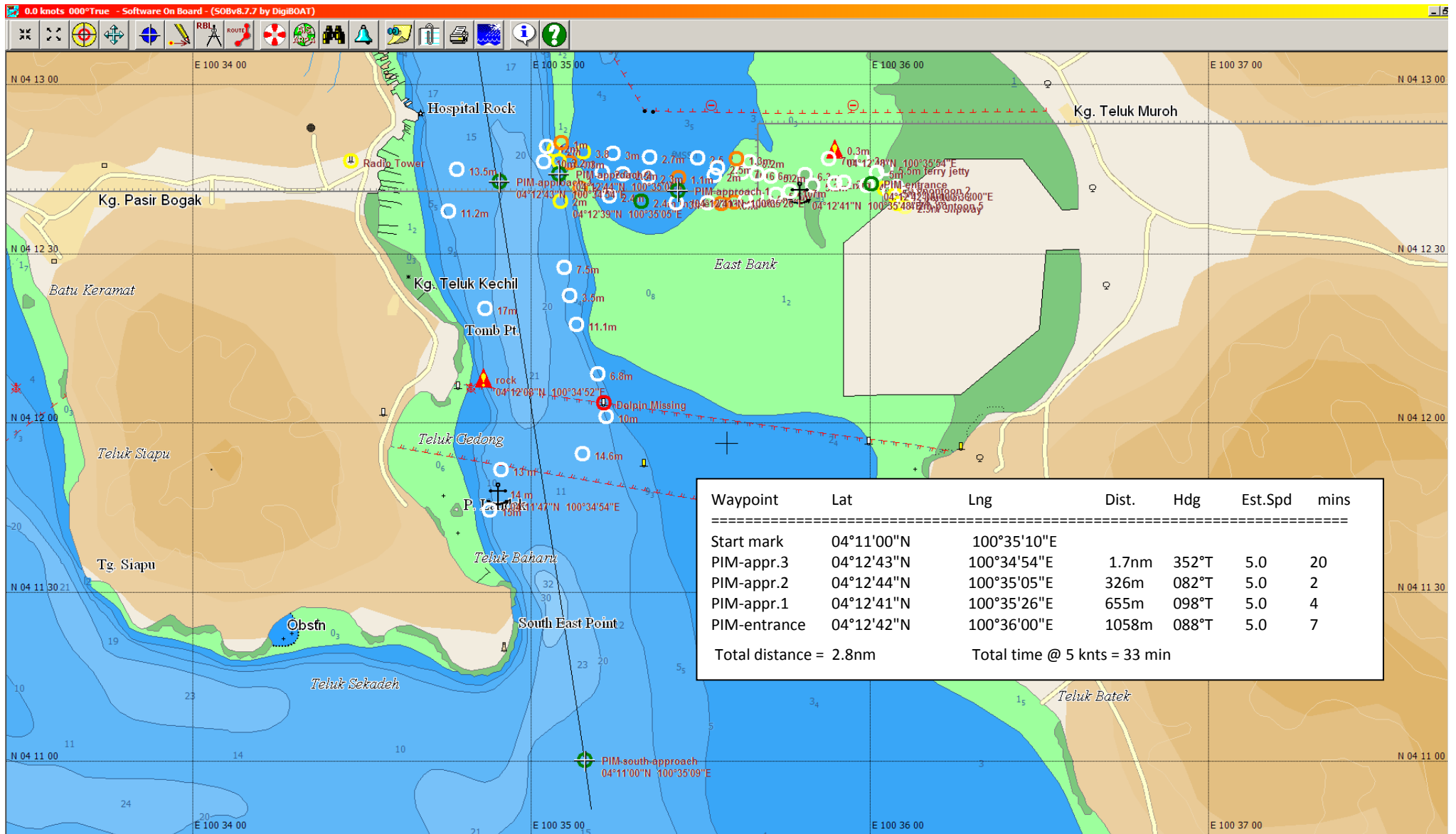
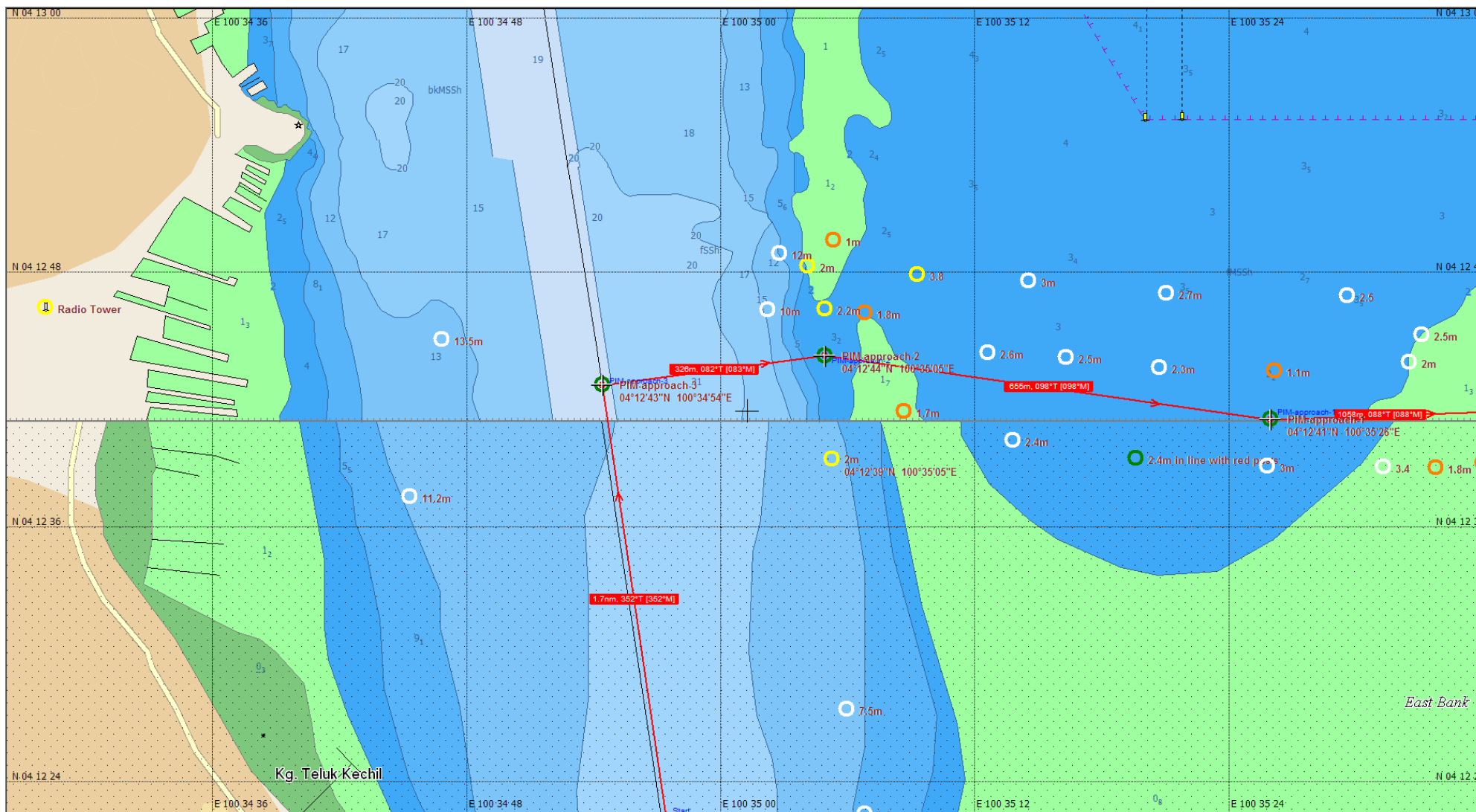


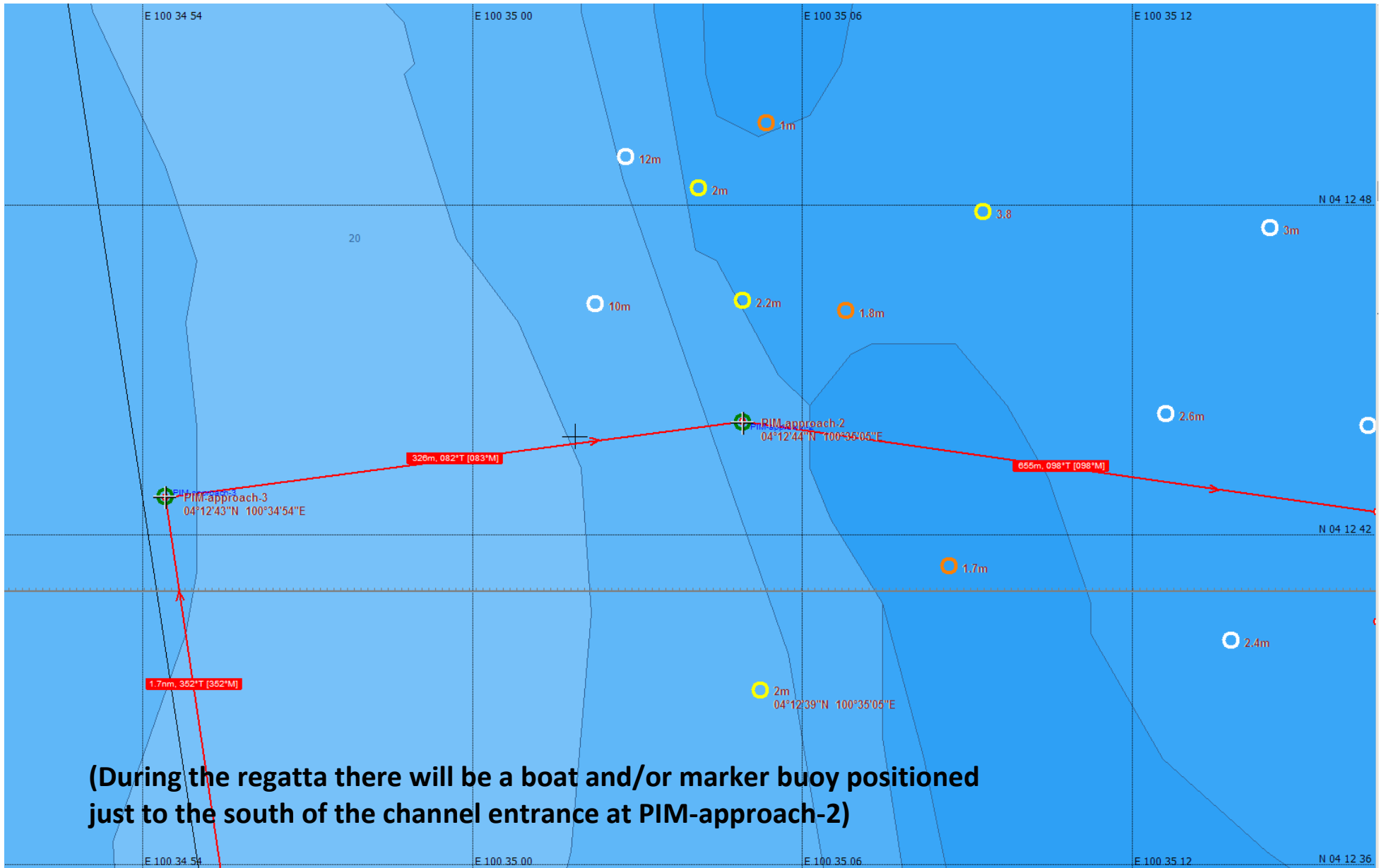
Approaches to Pangkor Island Marina entrance from the South (download hi-res images at www.rmsir.com/rmsir_addftp/PIMcharts/charts.zip)

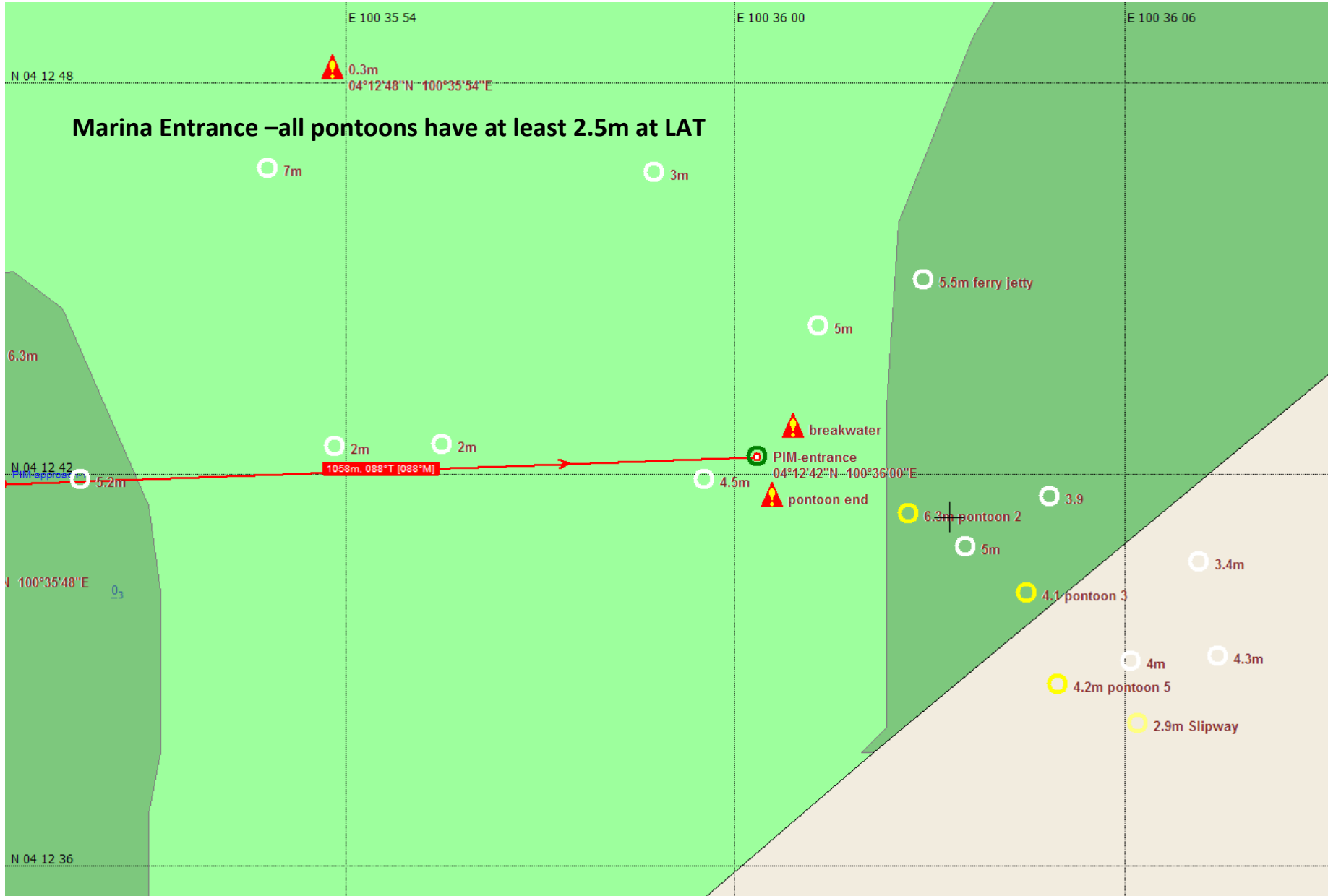


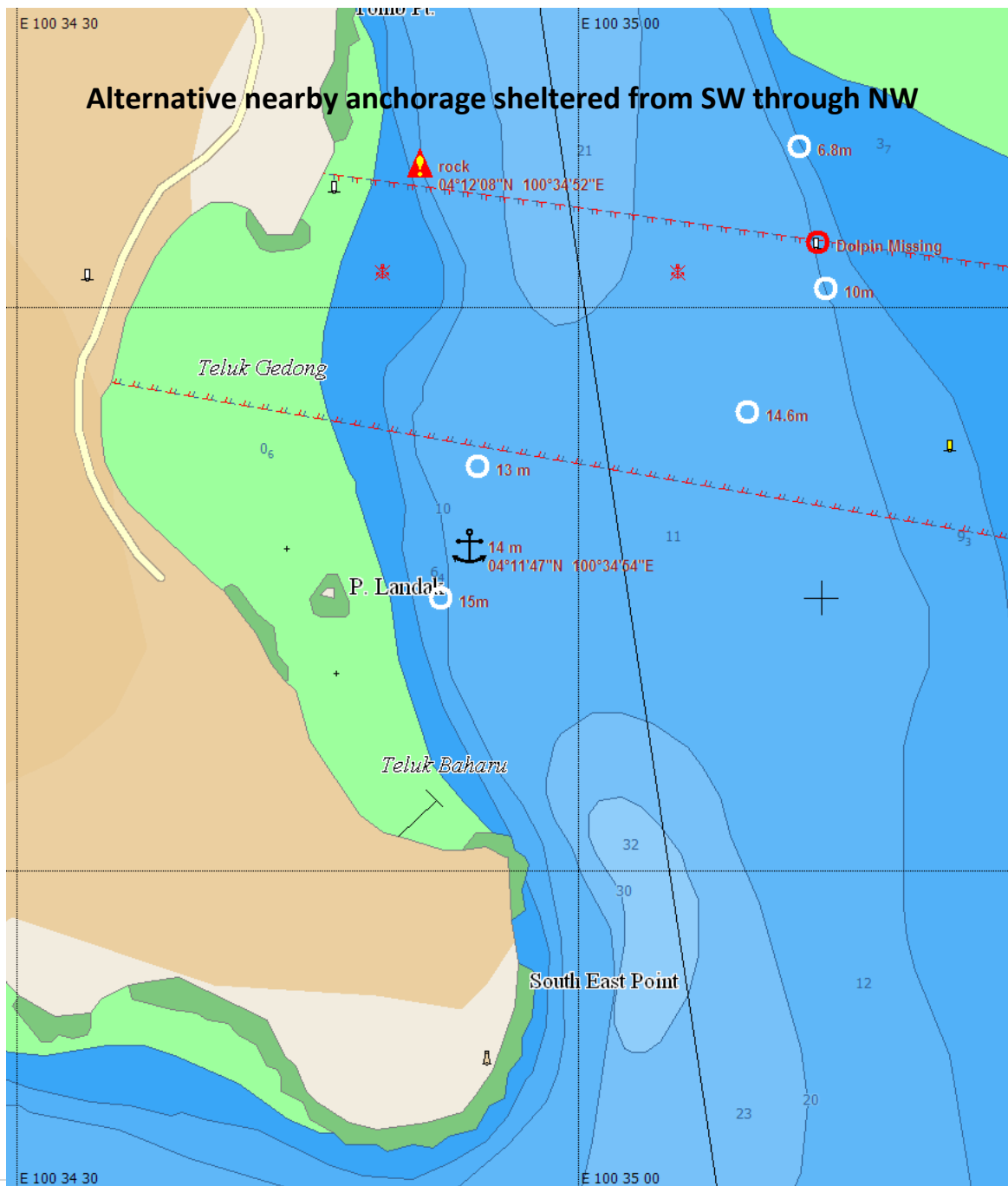
Approach with recent soundings (LAT)



Approaches to Pangkor Island Marina entrance from the South (download hi-res images at www.rmsir.com/rmsir_addftp/PIMcharts/charts.zip)







Waypoints

Name	Latitude	Longitude
PIM-south-approach	04°11'00"N	100°35'09"E
PIM-approach-3	04°12'43"N	100°34'54"E
PIM-approach-2	04°12'44"N	100°35'05"E
PIM-approach-1	04°12'41"N	100°35'26"E
PIM-entrance	04°12'42"N	100°36'00"E
pontoon end	04°12'42"N	100°36'01"E
breakwater end	04°12'43"N	100°36'01"E
Radio Tower	04°12'46"N	100°34'28"E
Dolphin Missing	04°12'03"N	100°35'13"E

Plan of Marina

Please note that some buildings are still under construction, but all services are available and there is more than ample parking.

The Best Western Hotel is located just to the SE of the Dry Park area, across the road... less than 5 mins walk from the pontoons.

The regatta prize giving dinner will be held in the large function hall to the east of the hotel.

Road access to the Marina Island from Kuala Lumpur is 250 km via the North/South highway, or 230km from Port Klang via the coast road.

